

- * Please come to the front and get all worksheets**
- * Please get the list PRES from my calculators**
- * Please complete the multiple choice sheet while I check HW**
- * And of course put HW problems on the board for Extra Credit**

* SHAPE CENTER SPREAD

Describing Distributions

pictures of data
(graphs)

1- Overall Pattern

understand data

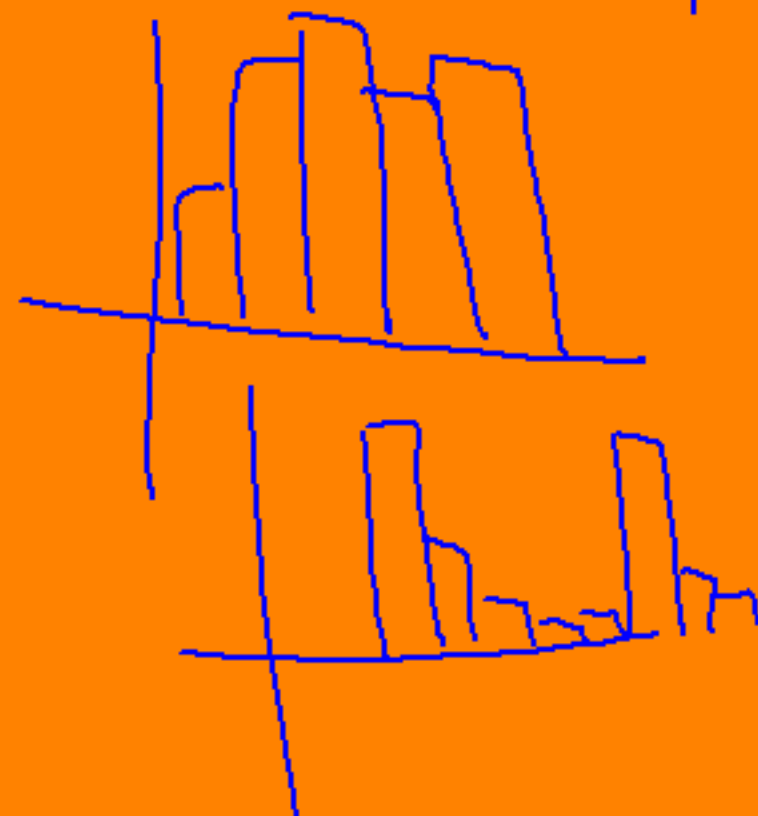
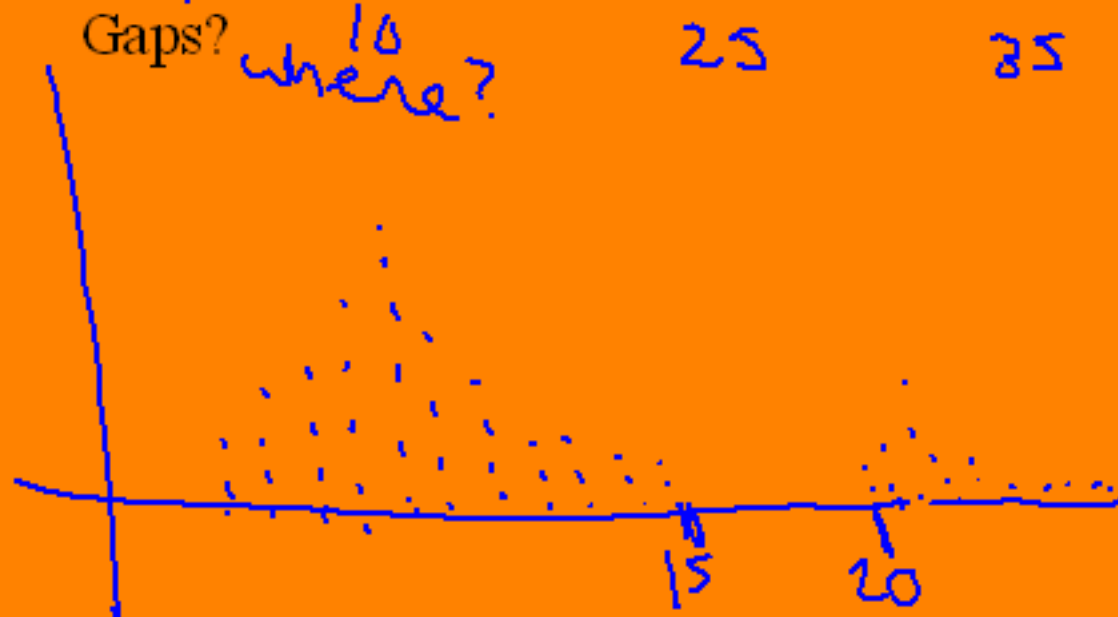
- Any deviations from the overall pattern?

* 2- Shape

- Peaks?



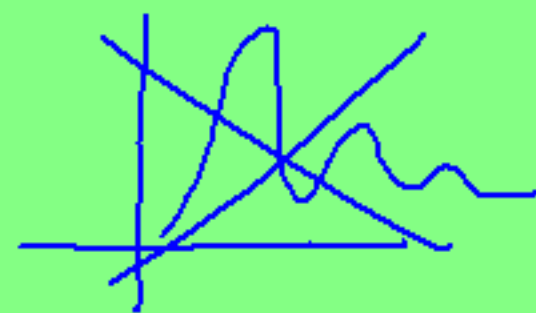
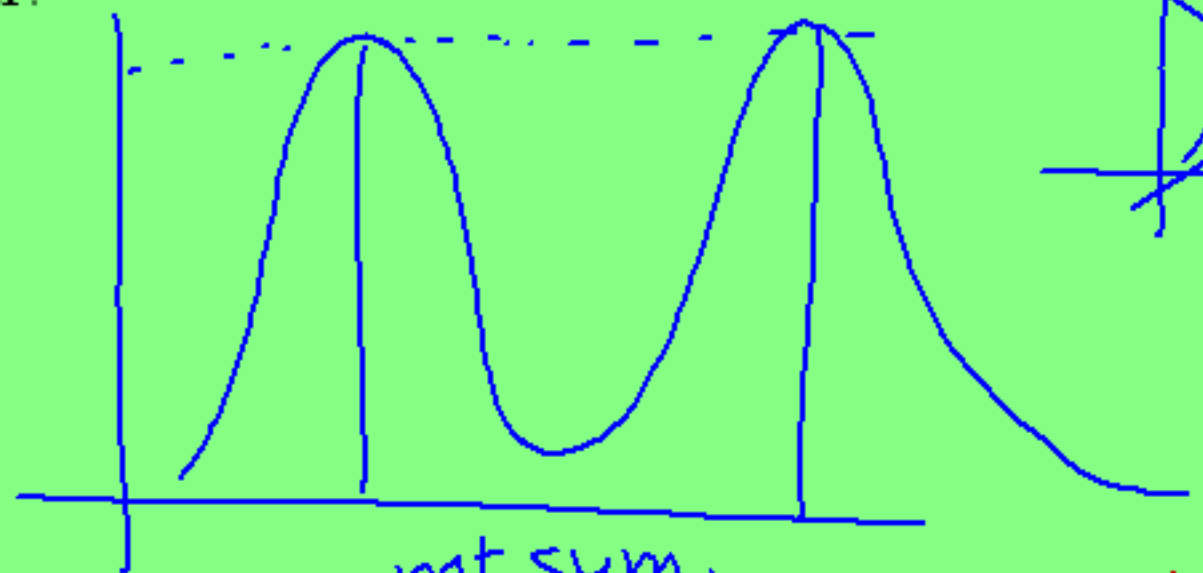
- Gaps?



trimodal

mode = most freq. (peak)

- Unimodal, Bimodal?



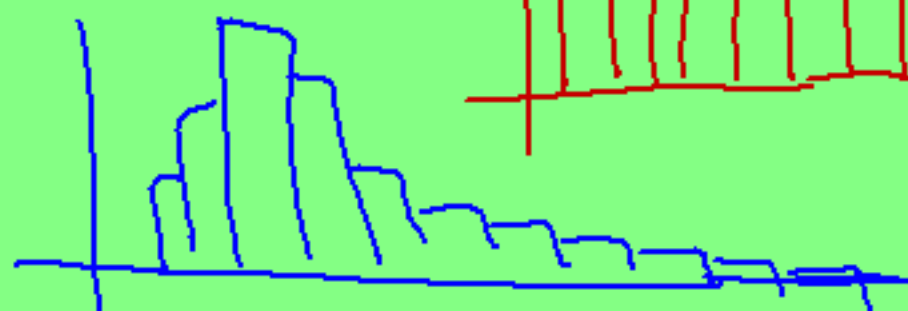
roughly
Symmetric,



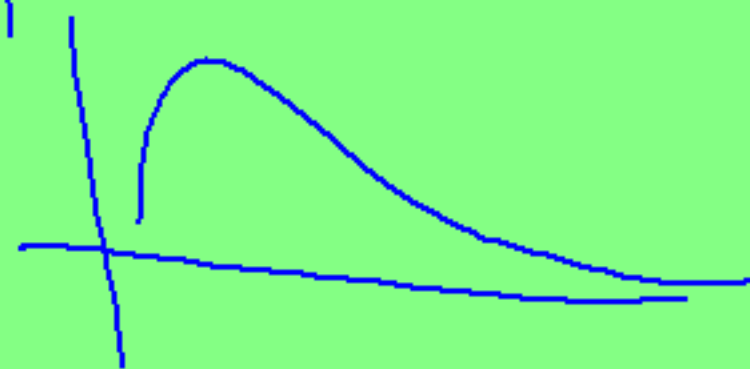
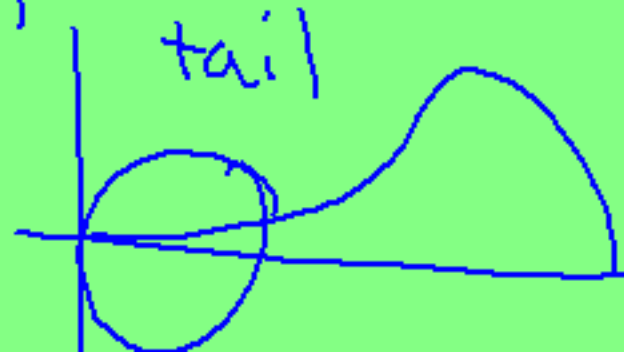
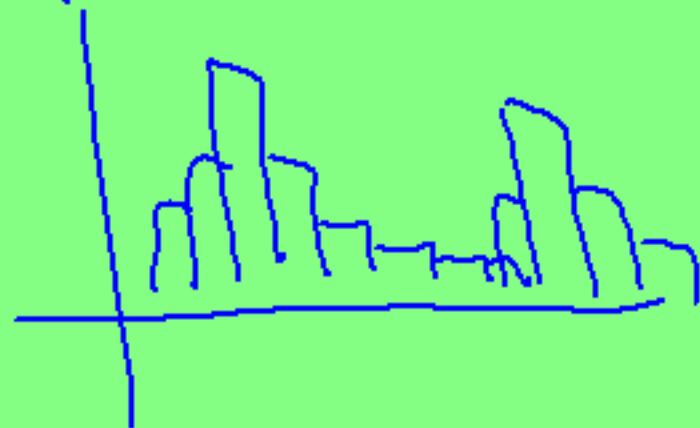
Left Skewed,



Right Skewed-



Uniform-



3- Center

- Approximation
- The middle (halfway) number

Med, \bar{x}

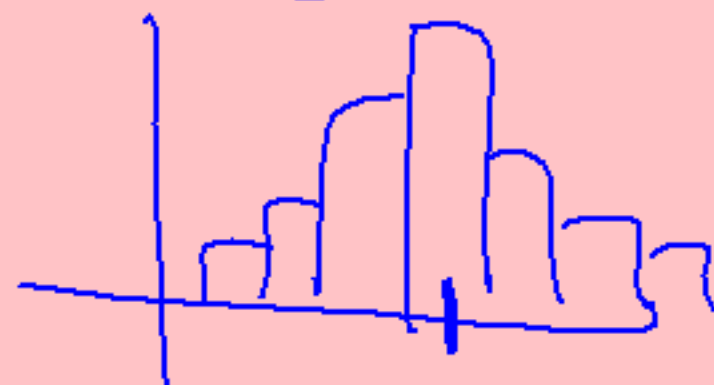
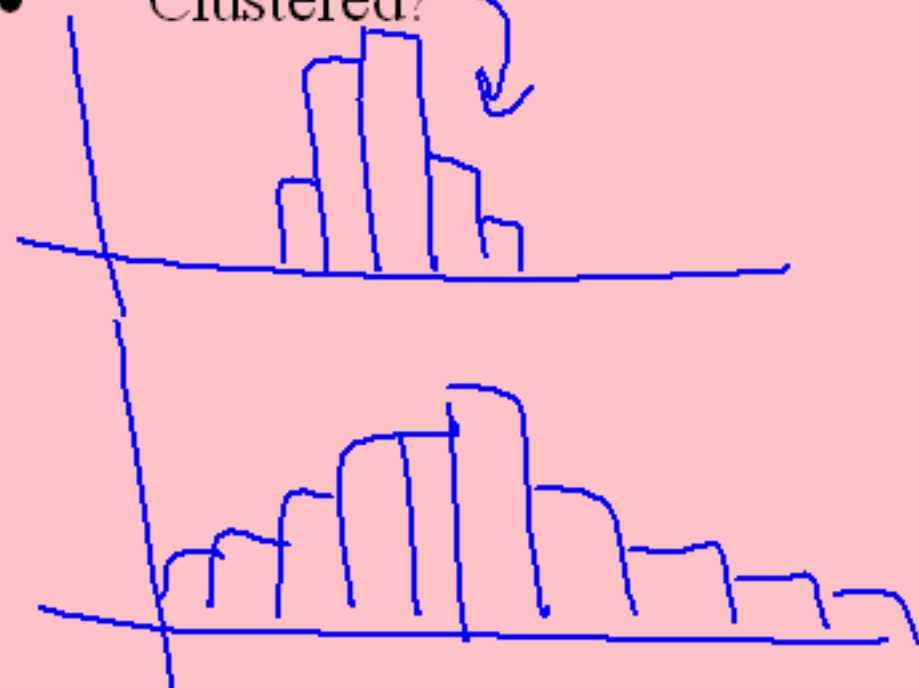


4- Spread

- Range (lowest to highest number)

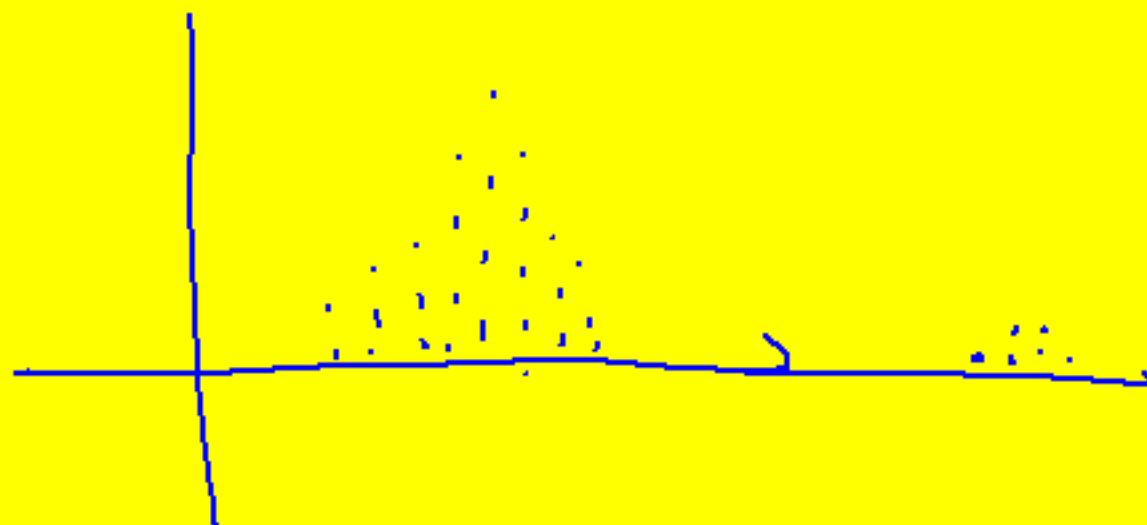
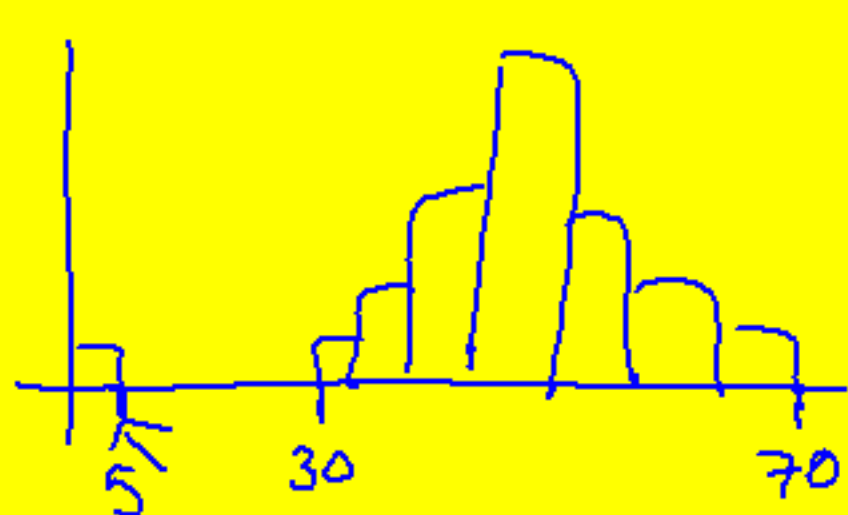
(a, b) (10, 100)

- Clustered?



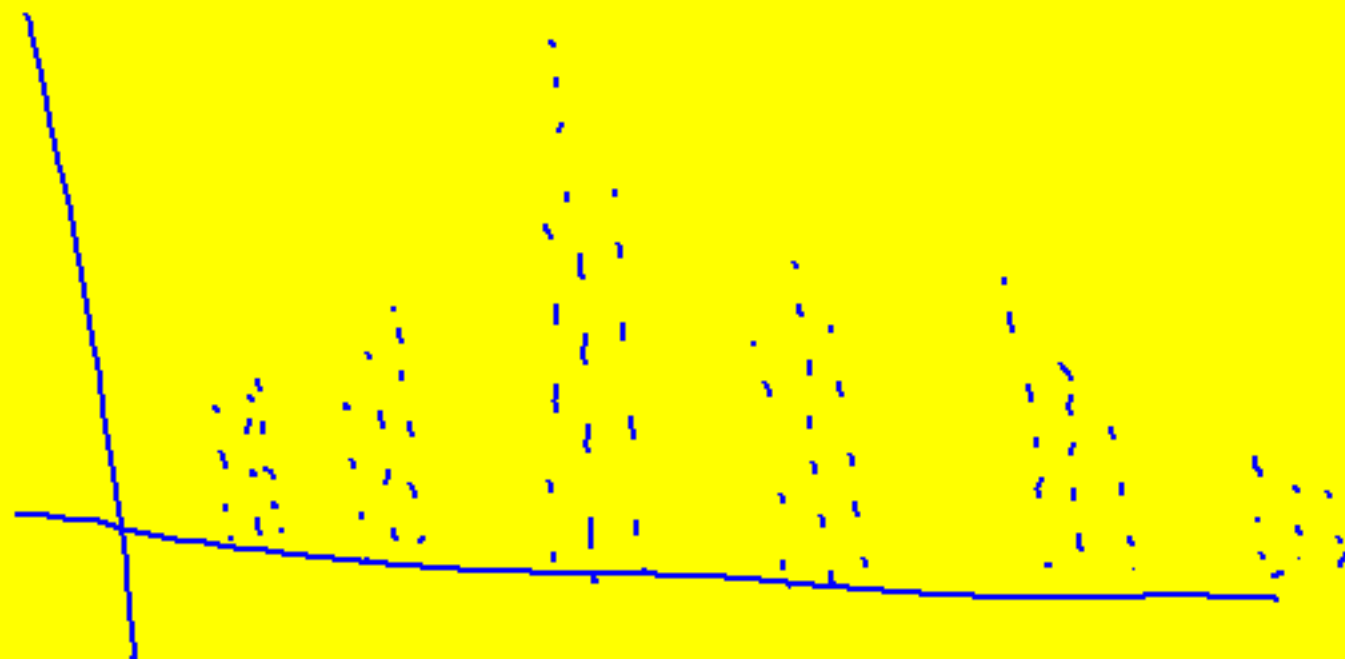
5- Possible Outliers

- Unusually large or small deviations from the overall pattern

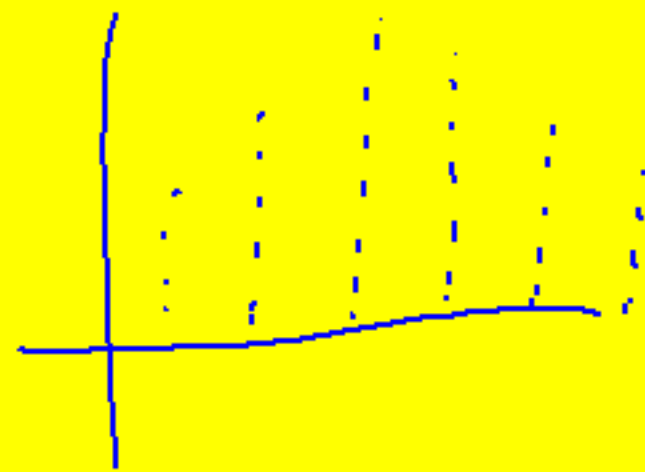


6- Granularity

- Consistent and understandable gaps in the values that the variable takes



Ex: MC
10Q test



Complete the worksheet on Describing Distributions

